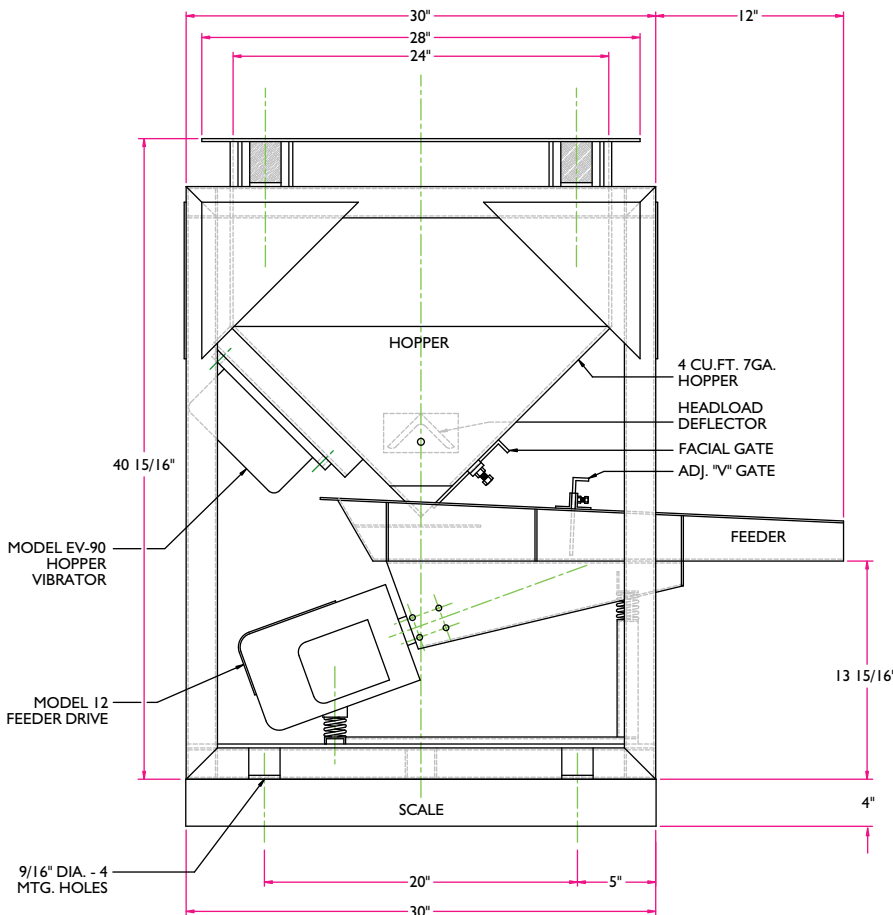
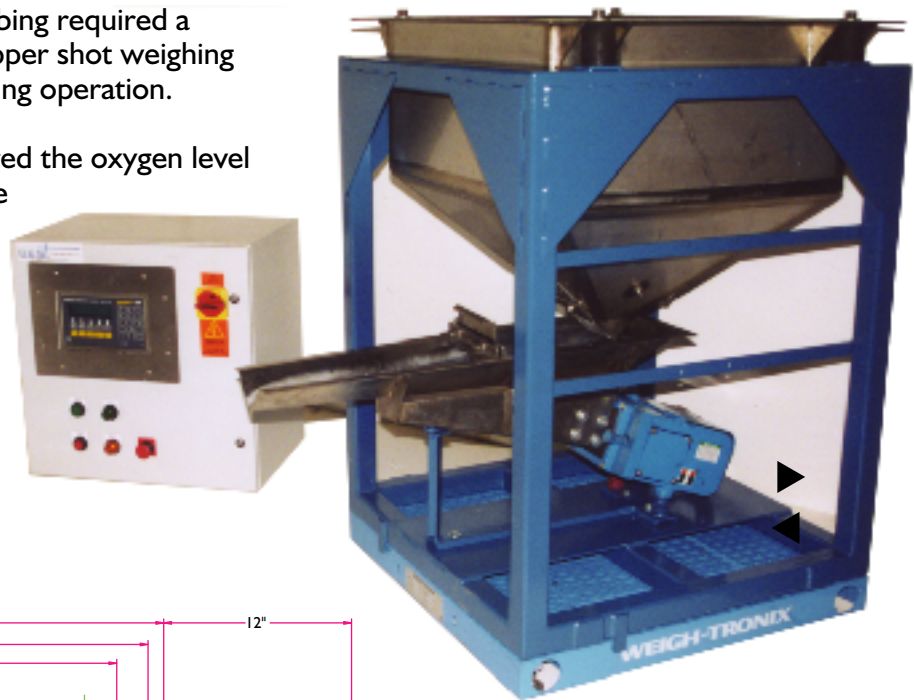


"LIW" Loss-in-Weight Hopper Feeder for Continuous Monitored Flow

A leading manufacturer of copper tubing required a feed system to add phosphorous copper shot weighing 270 lbs./cu. ft. to a continuous smelting operation.

The controls on the furnace monitored the oxygen level in the smelting area and indicated the rate at which the shot needed to be delivered. The design feed rate was 45-80 pounds per hour.

B.E.S.T., Inc. supplied a Model HF-E-V-630-12-(4)-LIW Hopper Feeder with an electromagnetic vibratory feeder.



The trough was a vee style 6-inch by 30-inch with a Wier type gate and a controller with a 4-20MA follower. All product surfaces were supplied in 304 stainless.

The scale and indicator supplied in the assembly are Weigh-Tronix components. The software and programming were supplied by B.E.S.T.

A second unit was purchased approximately six months after the first one was installed.

A P P L I C A T I O N H F E 0 1 5

B.E.S.T.

BULK EQUIPMENT SYSTEMS TECHNOLOGY, INC.
 1071 Industrial Parkway North • Brunswick, Ohio 44212
 (330) 273-1277 • 1-800-827-9237 • FAX (330) 225-8740

www.bestvibes.com

1002 - HFE